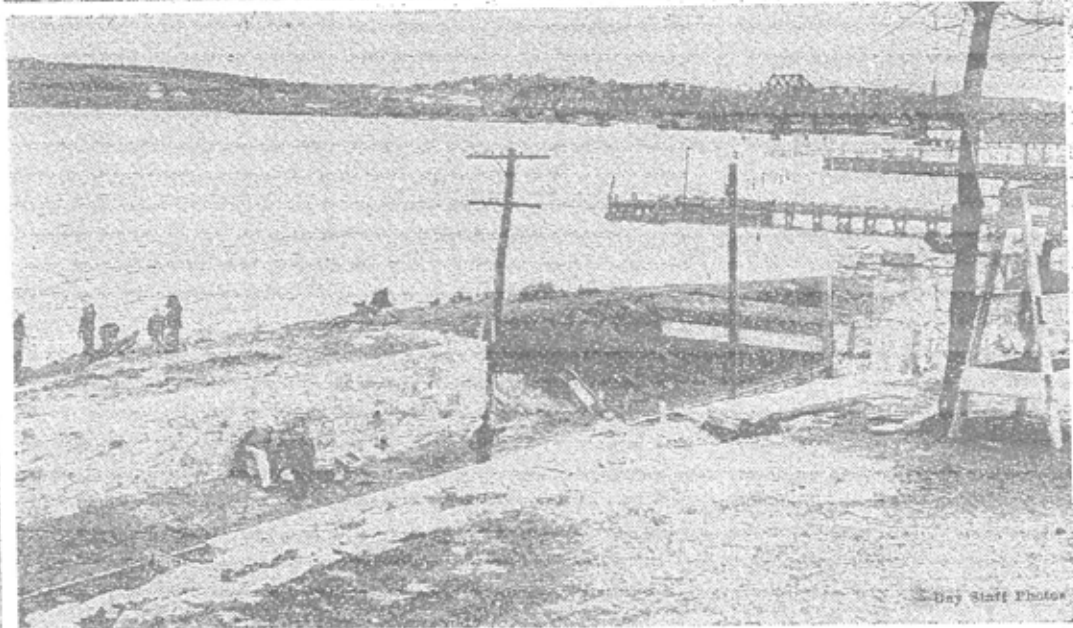
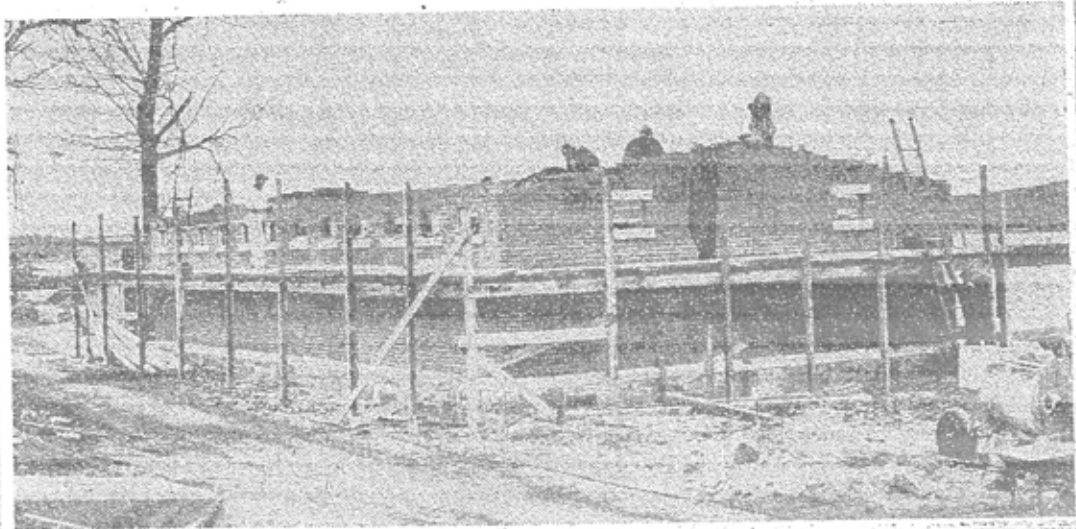


THE PUBLIC LIGHTS
OF NEW LONDON COMM
Improvements Start at Riverside Park 1940.



Improvements being made at Riverside park:

Top—The new permanent bathhouse in the park near the Riverside beach is now ready for its roof. This structure will contain 32 bathhouses, an office, showers and toilets. It is being built by the John D. McWilliams Co. of Norwich.

Bottom—Where a foot bridge over the Central Vermont railroad tracks is to be built. Foundation walls for the bridge are now practically complete. The Riverside park pier is seen at the right.

1
2
3
4
5
6
7
8
9
10
11
12
13
14
15
16
17
18
19
20
21
22
23
24
25
26
27
28
29
30
31
32
33
34
35
36
37
38
39
40
41
42
43
44
45
46
47
48
49
50
51
52
53
54
55
56
57
58
59
60
61
62
63
64
65
66
67
68
69
70
71
72
73
74
75
76
77
78
79
80
81
82
83
84
85
86
87
88
89
90
91
92
93
94
95
96
97
98
99
100

1
2
3
4
5
6
7
8
9
10
11
12
13
14
15
16
17
18
19
20
21
22
23
24
25
26
27
28
29
30
31
32
33
34
35
36
37
38
39
40
41
42
43
44
45
46
47
48
49
50
51
52
53
54
55
56
57
58
59
60
61
62
63
64
65
66
67
68
69
70
71
72
73
74
75
76
77
78
79
80
81
82
83
84
85
86
87
88
89
90
91
92
93
94
95
96
97
98
99
100